

**THE PRESIDIO TRUST
BOARD OF DIRECTORS**

**RESOLUTION 15-8
KOREAN WAR MEMORIAL**

WHEREAS, [16 U.S.C. §460bb appendix](#) authorizes the Presidio Trust to manage, maintain and improve the property within the Presidio of San Francisco under its administrative jurisdiction (“Area B”); and

WHEREAS, the Presidio Trust Board of Directors adopted a [Commemorative Works Policy](#) which authorized the Presidio Trust, upon certain findings by the Board of Directors, to install a memorial in Area B designed to perpetuate in a permanent manner a significant element of history; and

WHEREAS, the Board of Directors adopted a [Philanthropic Recognition Policy](#) requiring approval by the Board of Directors for on-site recognition of the generosity of individuals and organizations making philanthropic gifts to the Presidio; and

WHEREAS, the Board of Directors adopted [Resolution 13-15](#) supporting the creation and installation of a Korean War Memorial, subject to location and design approval, environmental and historic compliance approval, and additional findings by the Board of Directors; and

WHEREAS, the Board of Directors finds that compelling justification exists for recognition of the Korean War; and

WHEREAS, the Board of Directors finds that the proposed memorial is the best way to express the association between the Presidio and the Korean War; and

WHEREAS, the Board of Directors finds that the association between the Presidio and the Korean War is of exceptional national importance; and

WHEREAS, the Board of Directors finds that on-site recognition of individual donors and organizations is appropriate; and

WHEREAS, the Board of Directors finds that the proposed location and design of the memorial is desirable and appropriate; and

WHEREAS, findings by the Board of Directors are supported by the attached staff memorandum;

NOW, THEREFORE, BE IT RESOLVED, that the Presidio Trust Board of Directors hereby approves the proposed design and location of the Korean War Memorial, subject to final environmental and historic preservation compliance approval.

Adopted: February 19, 2015

STAFF REPORT



Date February 19, 2015

Subject Korean War Memorial

Recommendation

Presidio Trust staff recommends that the Board of Directors approve the Korean War Memorial as proposed in the attached Concept Design. This recommendation includes the approval of the triangular site at the intersection of Sheridan Avenue and Lincoln Boulevard as the permanent site on which the memorial will be constructed. Staff recommends that the design as currently shown be approved, after which design details will be finalized by Trust staff and the Trust's partners at the Korean War Memorial Foundation.

Background

The development of a memorial for the Korean War within the Presidio of San Francisco is consistent with the Trust's Commemorative Works Policy in recognizing a significant historical event. Compelling justification exists for this recognition because of the close ties between the Presidio and the Korean War. Associations between the Presidio and the Korean War include:

1. The Sixth Army, headquartered in the Presidio since 1946, played an active role in training combat and support troops that were required for the buildup from 600,000 to 1.5 million US Army soldiers between 1950 and 1953.
2. The Presidio's Letterman Hospital was often the first stateside facility treating the wounded and sick returning from the conflict.
3. The recently constructed Golden Gate Club (135 Fisher Loop), just across Lincoln Boulevard from the proposed memorial site, was the location of two major treaty signings with Asian countries intended to support the United Nation's role in the Korean War.
4. The adjacent National Cemetery is the final resting place for 2,273 Korean War veterans.

The location and design of the proposed memorial are the best way to express the associations between the Presidio and the Korean War. The site selected in 2013 in consultation with the Korean War Memorial Foundation was deemed desirable by the aging veterans because of its view of the Golden Gate Bridge and therefore its connection with the Pacific Ocean and ultimately with the Korean peninsula beyond. Also visible from the site are the mountains of Marin County through which the 38th parallel runs on its way to separating the two countries of the Korean peninsula. The proposed memorial consists of a paved plaza bounded by a curving granite wall onto which iconic images of the war and informative text are arranged. The wall sits in a contemplative garden space that is meant to provide a place of both reflection and education for future generations.

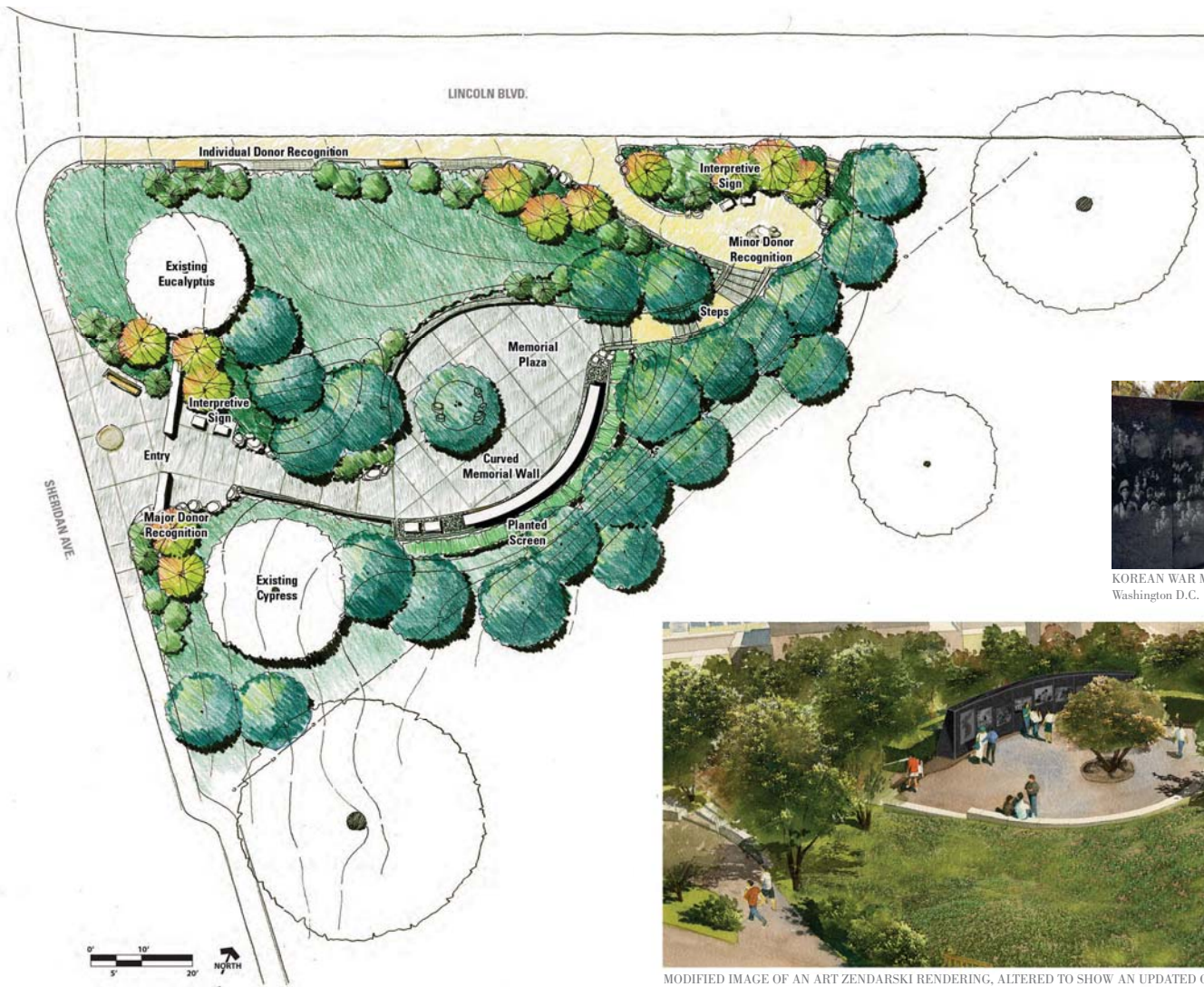
Included in the site design are provisions to recognize the donors that have supported the creation of this memorial. Up to 600 individual donors will have a commemorative brick or tile in memory of individuals associated with the war. Approximately 20 individuals will have a slightly larger plaque interspersed with the bricks acknowledging their gifts of \$10,000. Up to three individuals will have dedicated benches in recognition of their gifts of \$100,000. Finally, on the north side of the entry wall, an area will be set aside to recognize the 20 or so individuals and entities that have contributed from \$20,000 to \$400,000 for the memorial. At this same location at the entry wall, if it is deemed desirable by its government, an acknowledgment will be made of the expected gift of \$1,000,000 by the Republic of South Korea.

This project was preliminarily “scoped” through the Trust’s internal environmental review process under the National Environmental Policy Act (NEPA) and the National Historic Preservation Act (NHPA) in 2013. No significant issues were identified and the proposed development of the memorial was determined to be consistent with completed studies and recommendations for this area. Following Board approval, the project will return for complete NEPA and NHPA compliance review.

Attachment

Concept Design

PRESIDIO OF SAN FRANCISCO



Proposed Korean War Memorial at the Presidio of San Francisco